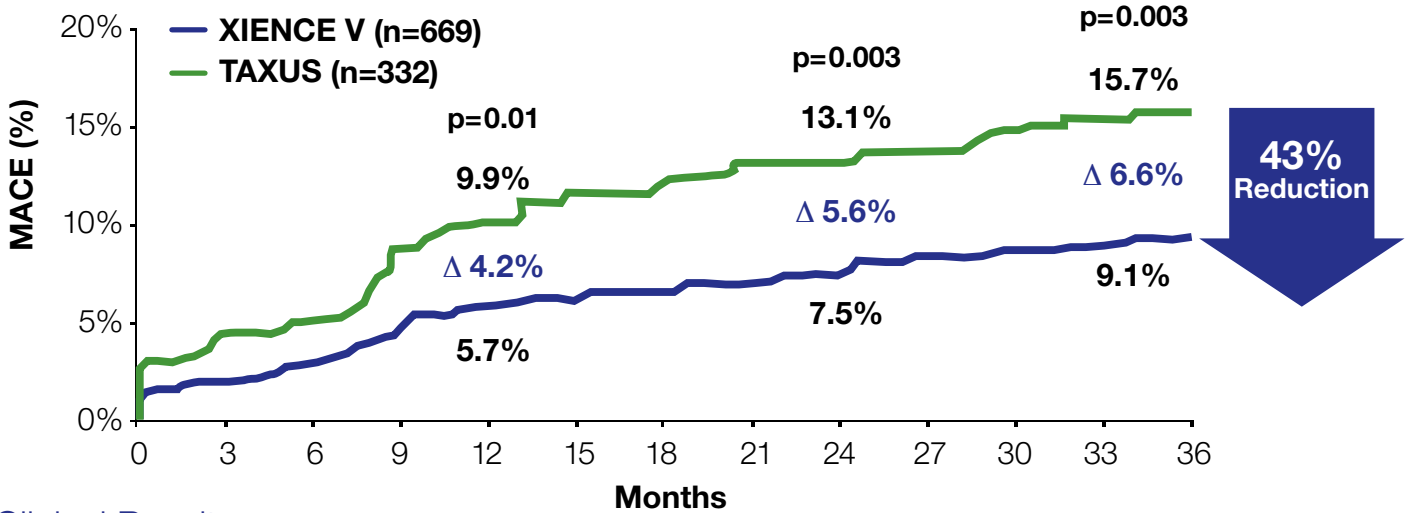
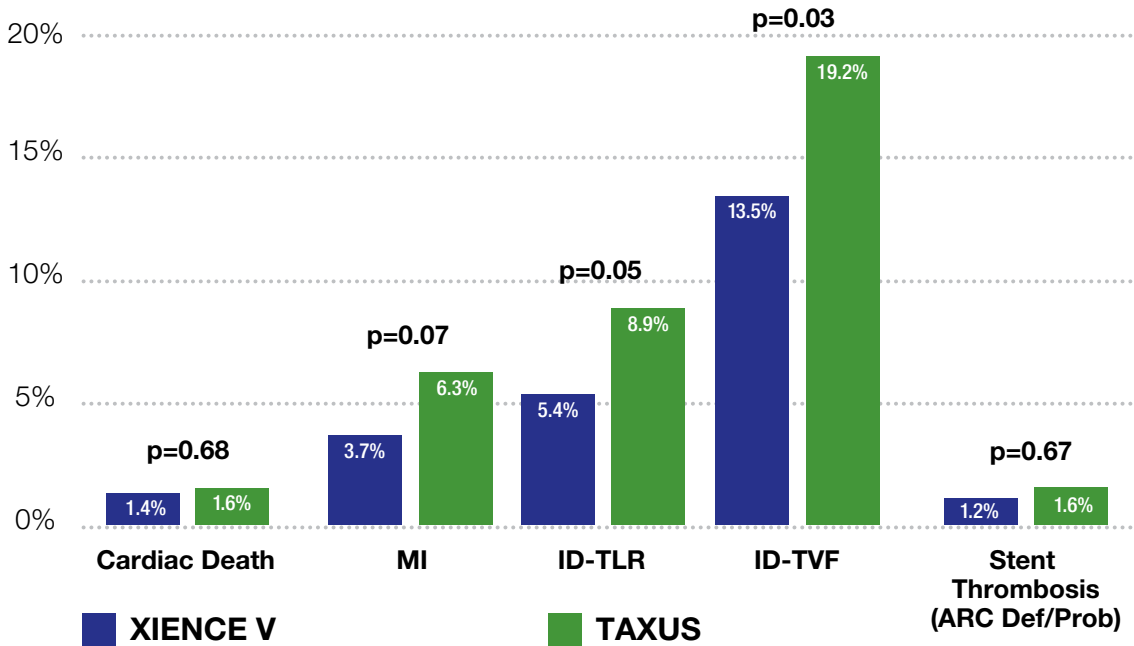


XIENCE – 43% Reduction in the Risk of MACE at 3 Years

3-Year MACE¹



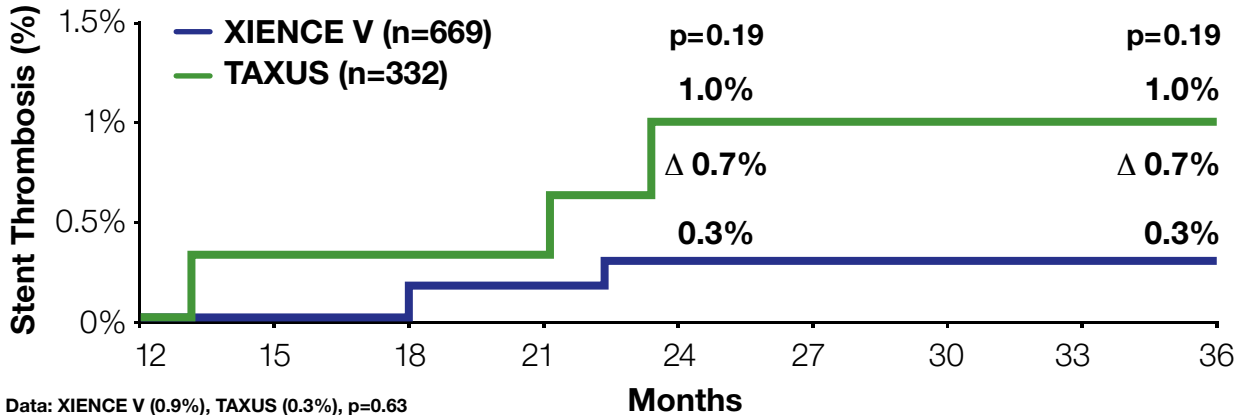
Clinical Results



Data based on Kaplan-Meier Estimates.
 MACE = Cardiac Death, MI, or ID-TLR.
 Source: Dr. Gregg Stone, SPIRIT III, 3-Year Results Presentation, TCT 2009. Dr. David Cox, SPIRIT III, 3-Year Results, TCT 2009. **TAXUS Express² was the control in SPIRIT III.**
¹P-values based on log-rank test. Number of patients based on number at risk at 3 years.

Low 0.3% Stent Thrombosis Rate Between 1 to 3 Years

Landmark Analysis Stent Thrombosis (ARC Def/Prob)²



Conclusions of Dr. David Cox

Compared to the TAXUS Express paclitaxel-eluting stent, the XIENCE V everolimus-eluting stent results in:

- Significantly less TVF, TLF and MACE at 3-years, with continued divergence of adverse events favoring XIENCE V from 2 to 3 years
- Significantly fewer TLR procedures
- A trend toward fewer peri-procedural and late MIs
- Lower rates of TVF and MACE across multiple subgroups
- Difference in rates of TVF and MACE didn't sustain through 3 years, rates of TVF and MACE in diabetics pts are comparable at 3 years
- Non significantly different rates of stent thrombosis, with a trend present toward less very late ST

XIENCE PRIME is built on XIENCE V DES technology.

Source: Dr. Gregg Stone, SPIRIT III, 3-Year Results Presentation, TCT 2009. Dr. David Cox, SPIRIT III, 3-Year Results, TCT 2009.

TAXUS Express² was the control in SPIRIT III. SPIRIT III 3 Year Press Release.

²P-values based on log-rank test. Number of patients based on number at risk at 3 years.

Abbott International BVBA

Park Lane, Culliganlaan 2B, B-1831 Diegem, Belgium
Tel: 32.2.714.14.11 Fax: 32.2.714.14.12

Abbott Vascular

3200 Lakeside Drive, Santa Clara, CA 95054 USA
Tel: 408.845.3000 Fax: 408.845.3333
Customer Service: 1.800.227.9902

All tests performed by and data on file at Abbott Vascular.

CE

Information contained herein for distribution outside the USA and Japan ONLY. Please check the regulatory status of the device before distribution in areas where CE marking is not the regulation in force.

This product is intended for use by or under the direction of a physician. Prior to use, it is important to read the package insert thoroughly for instructions for use, warnings and potential complications associated with the use of this device.

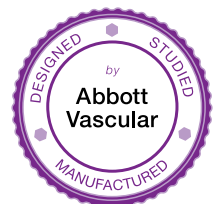
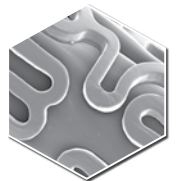
XIENCE V and XIENCE PRIME are trademarks of the Abbott Group of Companies.

TAXUS and TAXUS Express² are trademarks of Boston Scientific or its affiliates.

For more information, visit our web site at www.XiencePrime.com

©2009 Abbott Laboratories. All rights reserved.

LT2929804-01 Rev. A 10/09



Abbott
Vascular